



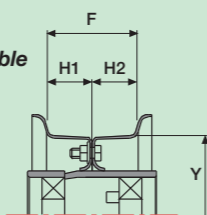
Cerchi con mozzo
Rims with hub

4"

Altre misure a richiesta
Other size to request

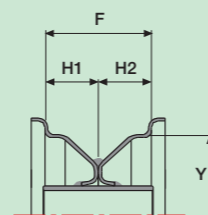
Scomponibile
Centrale

Central
Decomposable



Saldato
Centrale

Central
Whelded



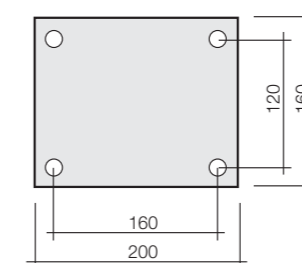
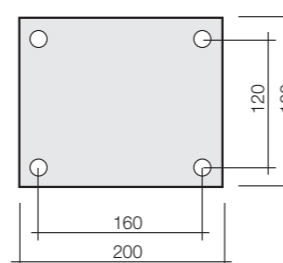
Denominazione cerchio Rim name			Boccola Welded		Gabbia rulli Roller bearing		Cuscinetti Bearings	
			Ø foro Ø hole	lunghezza lenght	Ø foro Ø hole	lunghezza lenght	Ø foro Ø hole	lunghezza lenght
M04-42 2.15x4"	•	—	16	80	—	—	—	—
M04-42 2.15x4"	•	—	20	80	—	—	—	—
M04-42 2.15x4"	•	—	25	80	—	—	—	—
M04-42 2.15x4"	•	—	30	80	—	—	—	—
M04-42 2.15x4"	•	—	—	—	20	75	—	—
M04-42 2.15x4"	•	—	—	—	—	—	20	80
M04-08 2.50x4"	—	•	16	80	—	—	—	—
M04-08 2.50x4"	—	•	20	80	—	—	—	—
M04-08 2.50x4"	—	•	25	80	—	—	—	—
M04-08 2.50x4"	—	•	—	—	20	75	—	—

7

8

Supporto fisso
Fixed castor

Supporto girevole
Swivel castor



Altre misure a richiesta
Other size to request

Canale Grooved rim	2.15 x 4" Scomponibile Decomposable	2.50 x 4" Saldato Welded
Y	100	100
F	54	62
H ₁	27	31
H ₂	27	31

Altre misure a richiesta - Other size to request



Cerchi con mozzo
Rims with hub

6"

Altre misure a richiesta
Other size to request

Denominazione cerchio
Rim name

Denominazione cerchio Rim name	Centrale Scomponibile Central Decomposable	Centrale Girello Central Rotator	Centrale Saldato Central Welded	Laterale Scomponibile Lateral Decomposable	Laterale Girello Lateral Rotator	Laterale Saldato Lateral Welded	Tipo Mozzo Roller bearing									
							Boccola Bushe		Cuscinetti Bearings		Girello Rotator		Albero forcella Fork shaft		Albero laterale Side shaft	
	Ø foro Ø hole	lunghezza length	Ø foro Ø hole	lunghezza length	Ø foro Ø hole	lunghezza length	Ø foro Ø hole	lunghezza length	Ø foro Ø hole	lunghezza length	Ø foro Ø hole	lunghezza length	Ø foro Ø hole	lunghezza length	Ø foro Ø hole	lunghezza length
M06-08 2.50x6"	•	—	•	—	—	—	20/25/30	80	20/25	80...150	—	—	17/20	185	25/30	100
M06-08 2.50x6"	—	•	—	—	—	—	—	—	—	—	25	51	—	—	—	—
M06-13 3.75x6"	•	—	•	•	—	•	20/25/30	80	20/25	80...150	—	—	17/20	185	25/30	100
M06-13 3.75x6"	—	•	—	—	•	—	—	—	—	—	25	51	—	—	—	—
M06 4.50x6"	—	—	•	—	—	—	20/25/30	80	20/25	80...150	—	—	17/20	185	25/30	100
M06-18 5.00x6"	•	—	•	—	—	—	20/25/30	80	20/25	80...150	—	—	17/20	185	25/30	100
M06-18 5.00x6"	—	•	—	—	—	—	—	—	—	—	25	51	—	—	—	—

9

10

Altre misure a richiesta
Other size to request

Canale Grooved rim	2.50 x 6"	3.75 x 6"	3.75 x 6"	4.50 x 6"	5.00 x 6"
Y	150	150	150	150	150
F	68	96	96	114	124
H₁	34	48	34	57	62
H₂	34	48	62	57	62

Altre misure a richiesta - Other size to request

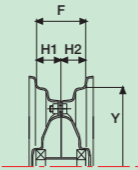


Cerchi con mozzo
Rims with hub

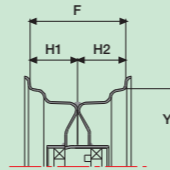
8"

Altre misure a richiesta
Other size to request

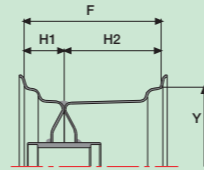
Centrale Girello
Central Rotator



Centrale Saldato
Central Welded



Laterale Saldato
Lateral Welded



Tipo Mozzo
Roller bearing

Denominazione cerchio Rim name	Centrale Girello Central Rotator		Centrale Saldato Central Welded		Laterale Saldato Lateral Welded		Boccola Bushe		Cuscinetti Bearings		Girello Rotator		Albero forcella Fork shaft		Albero laterale Side shaft	
	Ø foro Ø hole	lunghezza length	Ø foro Ø hole	lunghezza length	Ø foro Ø hole	lunghezza length	Ø foro Ø hole	lunghezza length	Ø foro Ø hole	lunghezza length	Ø foro Ø hole	lunghezza length	Ø albero Ø shaft	lunghezza length	Ø albero Ø shaft	lunghezza length
M08-04 1.50x8"	—	—	•	—	—	—	20	80	20	80...100	—	—	—	—	—	—
M08-08 2.50x8"	—	—	•	—	—	—	20	80	20/25	80...150	—	—	17	185	—	—
M08-08 2.50x8"	—	—	•	—	—	—	25/30	80...100	—	80...150	—	—	20	185	25...30	100
M08-08 2.50x8"	•	—	—	—	—	—	—	—	—	—	25	51	17	185	25	100
M08-14 4.00x8"	—	—	•	—	—	—	25/30	80...100	20/25	80...150	—	—	20...25	185	25...30	100
M08-14 4.00x8"	—	—	—	•	—	—	25/30	80...100	20/25	80...150	—	—	—	—	25...30	100
M08-18 5.00x8"	—	—	•	—	—	—	25/30	80...100	20/25	80...150	—	—	20...25	185	25...30	100
M08-18 5.00x8"	—	—	—	•	—	—	25/30	80...100	20/25	80...150	—	—	—	—	25...30	100
M08-20 5.50x8"	—	—	•	—	—	—	25/30	80...100	20/25	80...150	—	—	20...25	185	25...30	100
M08-23 6.25x8"	—	—	•	—	—	—	25/30	80...100	20/25	80...150	—	—	20...25	185	25...30	100
M08-23 6.25x8"	—	—	—	•	—	—	25/30	80...100	20/25	80...150	—	—	—	—	25...30	100
M08-26 7.00x8"	—	—	•	—	—	—	25/30	80...100	20/25	80...150	—	—	20...25	185	25...30	100
M08-26 7.00x8"	—	—	—	•	—	—	25/30	80...100	20/25	80...150	—	—	—	—	25...30	100

11

12

Altre misure a richiesta
Other size to request

Canale Grooved rim	1.50 x 8"	2.50 x 8"	4.00 x 8"		5.00 x 8"		5.50 x 8"	6.25 x 8"		7.00 x 8"	
Y	202	202	202	202	202	202	202	202	202	202	202
F	38	62	100	99	124	126	140	124	156	176	175
H₁	19	31	50	31	62	31	70	78	31	88	50
H₂	19	31	50	68	62	95	70	78	125	88	125

Altre misure a richiesta - Other size to request

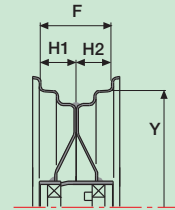


Cerchi con mozzo
Rims with hub

10"

Denominazione cerchio
Rim name

Centrale Saldato
Central Welded



Altre misure a richiesta
Other size to request

M10-10 3.00x10"

•

M10-12 3.50x10"

•

Tipo Mozzo
Roller bearing

13

Denominazione cerchio Rim name	Boccola Bushe		Cuscinetti Bearings		Girello Rotator		Albero forcella Fork shaft		Albero laterale Side shaft	
	Ø foro Ø hole	lunghezza length	Ø foro Ø hole	lunghezza length	Ø foro Ø hole	lunghezza length	Ø foro Ø hole	lunghezza length	Ø foro Ø hole	lunghezza length
M10-10 3.00x10"	25...30	100	25	80...150	—	—	—	—	30	100
M10-12 3.50x10"	25...30	100	25	80...150	—	—	—	—	30	100

Altre misure a richiesta
Other size to request

Canale Grooved rim	3.00 x 10"	3.50 x 10"
Y	252	252
F	76	88
H₁	38	44
H₂	38	44

Altre misure a richiesta - Other size to request